



sustainable
warwick

Presentation at Town of Warwick Senior Center

Wednesday, May 14, 2019

Waste Prevention, Reuse & Recycling In Orange County

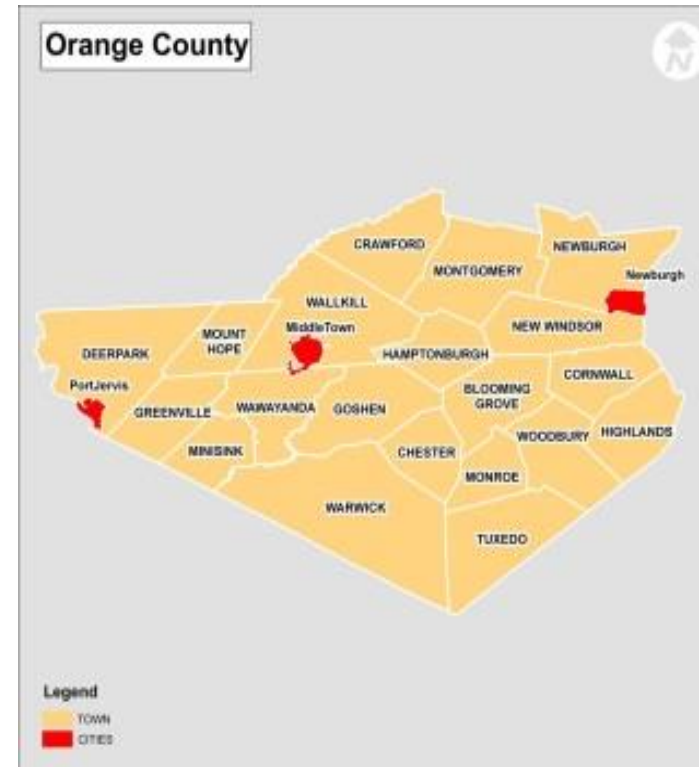
Introduction - Video

- [*“The American Recycling Center Tour”*](#) (4:08 mins)

Division of Environmental Facilities & Services

- Orange County Sewer District #1 (Harriman)
- O.C. Transfer Stations
 - TS #1 New Hampton
 - TS #2 Newburgh
 - TS #3 Port Jervis

For more details see
[this link](#)



Transfer Stations

1. New Hampton
 - 21 Training Center Lane, Rt. 17M
 - M-F 8a-3:30p & Saturday 7a-12noon
2. Newburgh
 - 9 Orr Avenue (and Route 17K)
 - M-F 8a-3:30p & Saturday 7a-12noon
3. Port Jervis
 - 86 Tow Path Road
 - M-F 8a- 3p & Saturday 8a-12noon

Transfer Stations (con't)

- In 2018, over 139,000 tons of solid waste (MSW) brought to county waste transfer stations along with an additional 39,000 tons of pre-sorted recyclables*.
- MSW then goes to Keystone Landfill in PA and recycling to the County Waste MRF in Port of Albany.
- Residents can drop off their recycling and refuse at the Citizens Drop-off Area (CDA).

*Includes Scrap Metal, Tires, Electronics, Textiles, Car Batteries, Motor Oil, Antifreeze, and Asphalt, as well as SSR & Paper



What you can bring to the T.S.

- Solid Waste
 - \$2.00 each 36 gal. bag (seniors \$0.50)
- Construction & Demolition Waste
 - \$20 for up to 380 lbs.
- Yard Waste
 - \$20 for up to 460 lbs.
- Scrap Metal
 - \$15 for up to 460 lbs. (incl. washers, dryers, stoves)
- **Recycling – FREE***



Recent Changes

Until November 2018...

Commercial Haulers were charged \$85/ton for MSW and \$5/ton for Single Stream Recyclables.

Municipalities were charged \$85/ton for MSW and \$0/ton for Single Stream Recyclables.

By December 2018 all haulers began being charged \$104/ton for both MSW and SSR.



**There is no more
“away”!**

Based on data collected by Waste Business Journal, over the next five years, total landfill capacity in the U.S. is forecast to decrease by more than 15%.

This means that by 2021 only 15 years of landfill capacity will remain. However, in some regions it could be only half that.

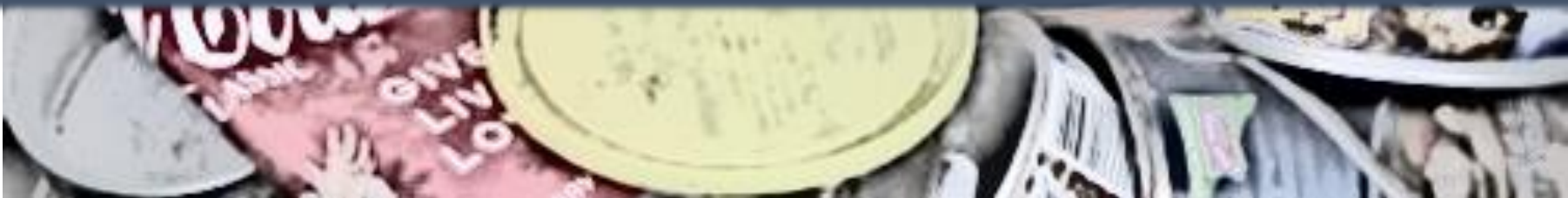
Time is Running Out: the U.S. Landfill Capacity Crisis
(<https://nrra.net/sweep/time-is-running-out-the-u-s-landfill-capacity-crisis/>)



China's Recycling Ban

- Until recently, more than 20% of recyclables generated in the U.S. have gone to China.
- At the start of 2018, the Chinese government enacted a ban on the import of various kinds of low-grade plastics and other materials that are extremely hard to recycle
- Why? Because we are using our recycling bins as a second trash can! [Plastic China](#) (2:25 – 9:00)

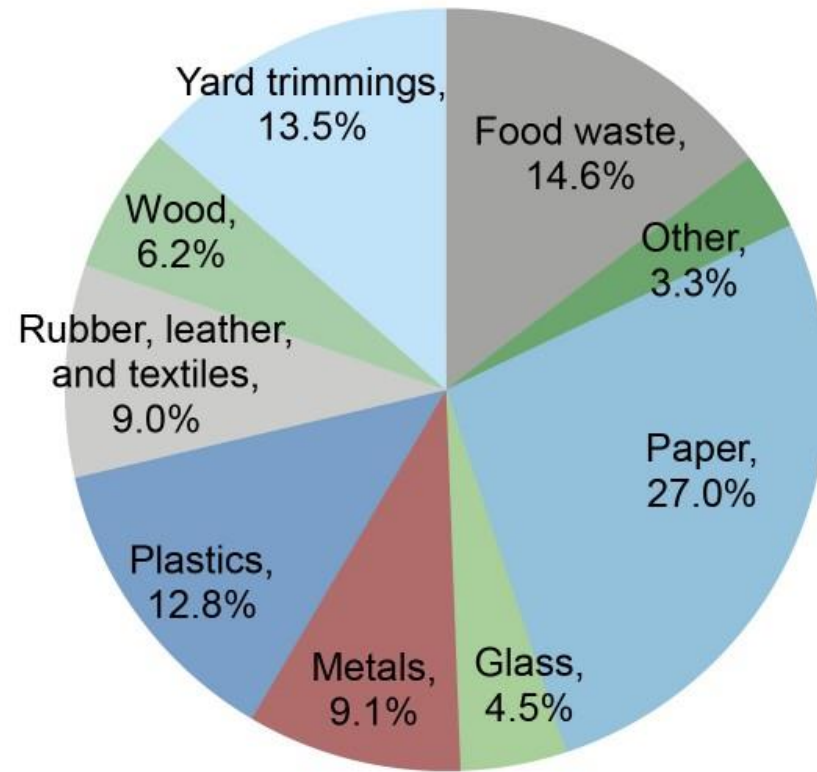
The US is Rapidly Running Out of Landfill Space (<https://www.globalcitizen.org/en/content/us-landfills-are-filling-up/>)



Contamination

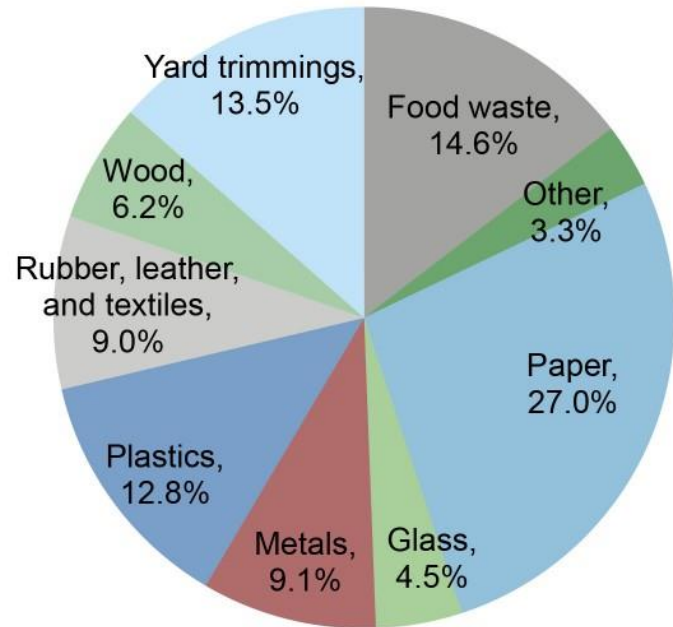


What's in our Waste?



US Waste Composition, 2013
US EPA

Materials Management Hierarchy





Waste Prevention

Reuse. Bring your own bag, bottle/mug, utensils.

Refuse. Plastic Bag Ban Coming Soon! March 1, 2020

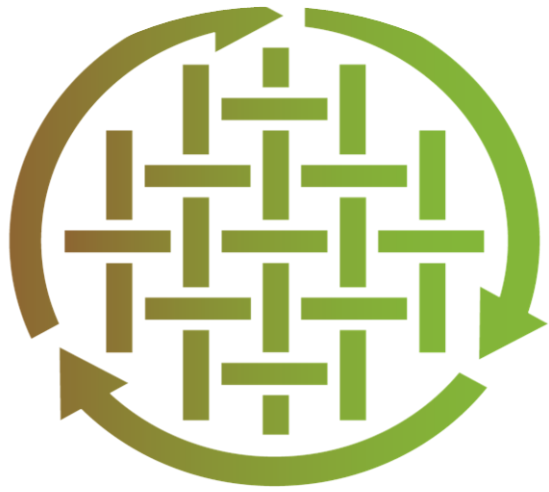
Reduce. About 40% of food is wasted.

- Film (1:59) [Save the food](#) (Ad Council)
- Volunteer at FeedHV.org.

Presentation on Low Waste Living at Thrall Library in Middletown on June 10th.



Other Waste Prevention, Reuse, & Repair links



[Hudson Valley Repair Café](#)

Senior Center, behind Town Hall Complex
132 Kings Highway
Warwick, NY, 10990

Sat. May 18

[Re-Clothe NY](#)

- <https://www.nysar3.org/page/re-clothe-ny-78.html>

[Plasticfilmrecycling.org](https://www.plasticfilmrecycling.org)



Reuse: Drop-off Locations in O.C.

- Habitat for Humanity ReStore in **Newburgh**
38 S. Plank Rd
(845) 565-1789



- Other sites in Orange County (from Dirt Magazine's [Recyclopedia](#))
 1. Salvation Army Family Store, **Port Jervis**
 - 130 Pike St., phone: (845) 856-1560
 2. Salvation Army Family Store, **Middletown**
 - 237 Wickham Ave, phone: (845) 344-0110
 3. The Hope Chest, **Pine Island**
 - 20 School House Road, phone: (845) 988-6885
 4. The Country Store Thift Shop, **Washingtonville**
 - 12 Hallock Drive, phone: (845) 496-8015
 5. Goodwill, **New Windsor**
 - 374 Windsor Hwy, phone: (845)569-8265

Vietnam War Veterans
Pick up service
1-800-775-VETS

Easy Home Composting!

Turn lawn and yard trimmings and food scraps into rich compost your plants will love.

Making compost takes some care; Add greens, browns, water and air.

**Make your pile come alive;
Encourage microbes to help it thrive!**

A healthy pile includes microorganisms, like bacteria and fungi. Create conditions in your pile so microorganisms thrive.

**You need a lot,
To get it hot.**

Pile greens and browns at least three feet high, wide and long to heat up and keep heat in your pile. Heat kills weed seeds and speeds composting.

**If your pile gets too dry,
Add water; don't let it die!**

Add water during dry spells to keep your pile damp. Microorganisms need water to survive.

**Let fresh air flow through your pile;
For an earthy smell all the while.**

Make sure your pile lets in lots of air for its microorganisms. Turn your pile with a garden fork and add plenty of browns for air spaces.

**Keep a store of browns near;
Add all throughout the year.**

Browns are needed in every season to add carbon and aerate your pile. Leaves decompose faster when you mow over or shred them first.

**Take it slow, nice and steady;
Give compost time to get ready.**

After six months to a year, when your compost is ready, spread it on your lawn, flower beds and landscaping to give them a boost.

Bin Sale Website

<https://orangecompostersale.ecwid.com/>

Distribution to take place at HHNM
Butterfly Weekend – Aug 17 & 18

Browns Storage

Main Working Pile

Compost Finishing Pile



See DEC's website and download the booklet, "EVERYTHING YOU HAVE ALWAYS WANTED TO KNOW ABOUT HOME COMPOSTING," for more information.
New York State Department of Environmental Conservation



...Dual Stream or Single Stream?

- Dual Stream
- Single Stream



WHAT CAN I RECYCLE?



What to Recycle? Paper







What to Recycle? Glass



What to Recycle?
Beverage Cartons

What to Recycle? Plastic



PETE



HDPE



V



LDPE

???



PP



PS



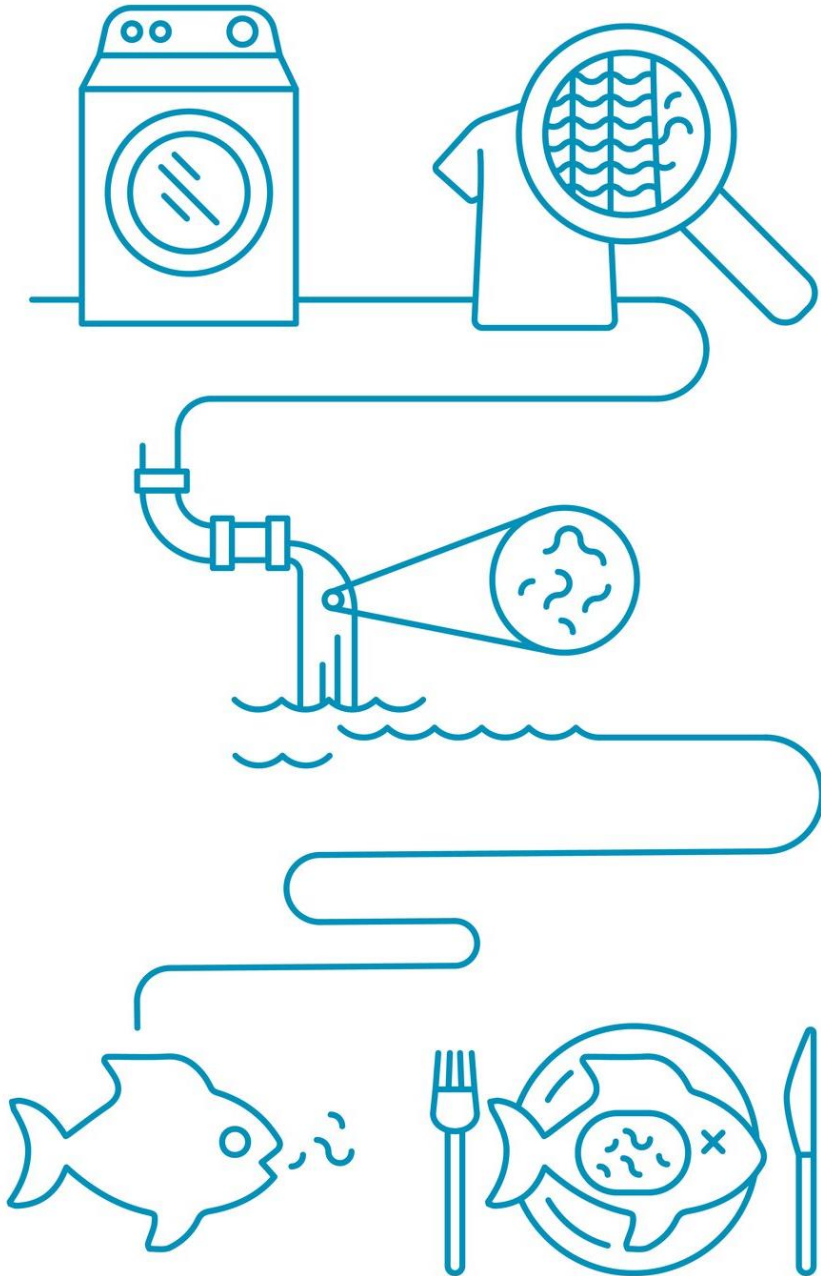
OTHER



What to Recycle? Plastic
Containers |



Recycled Plastic Products



Microfibers

- After wash microfibers ... travel to your local wastewater treatment plant, where up to 40% of them enter rivers, lakes and oceans,” according to findings published on the researchers’ website.
- Researchers at the University of California at Santa Barbara found that, [on average, synthetic fleece jackets release 1.7 grams of microfibers each wash.](#)
- [Microfibers made up 85% of human-made debris on shorelines around the world.](#) University of New South Wales, Australia

<https://www.theguardian.com/environment/2016/jun/20/microfibers-plastic-pollution-oceans-patagonia-synthetic-clothes-microbeads>



CoraBall.com



Recycling “No-Nos”

1. No food, liquids or trash!
Eat all your food! Keep containers for recycling at least 90% clean.
2. No bags in the recycling bin(s), nor bagged recyclables in bins.
 - Place recyclables loosely into the bin(s) and reuse bag or recycle at your local chain supermarket or drug store.
3. No Sharps! Place syringes or any medical sharp in rigid jar with sealable lid and bring to your local hospital or medical center.
4. Expanded Polystyrene (aka “Styrofoam”) not accepted in the recycling bin.



Household Hazardous Waste Events

What you can bring

- Adhesives
- Aerosol Cans
- Automotive fluids
- Batteries
- Chemicals
- Fluorescent bulbs
- Pesticides/Herbicides
- Solvents/Thinners
- Used Cooking Oil
- Varnishes/Shellac

More info [here](#).



What you can't bring

- Appliances
- Air Conditioners
- Electronics
- Latex Paint
- Propane Tanks
- Refrigerators
- Tires
- Next events:

– Port Jervis High School
June 8th 9 AM – 3 PM


– O.C. Fire Training Center
Sept 21st 9 AM – 3 PM

Takeaways



orangecountygov.com/efs

- Recycling market is depressed but still viable.
- We need to reduce contamination.
- Focus higher on the Materials Management Hierarchy (e.g. Reduce, Reuse, Repair).
- Compost your food scraps and yard waste.
- Save Household Hazardous Waste and bring to an upcoming collection day.
- Bring your TVs and other electronics to Best Buy and Newburgh & N.H. Transfer Stations.
- Drop off your scrap metal, appliances, tires and other recyclable items at the Transfer Station.

A man with short brown hair, wearing a grey sweater over a blue and white striped collared shirt, is standing on the right side of the frame. He is gesturing with his hands while speaking to a group of young people. The group, consisting of several teenagers, is gathered around a table on the left. They are holding various items: a white paper with text, a blue folder, a grey hoodie, and a blue baseball cap. One student in the foreground is wearing a yellow jacket. The background is a large, open industrial space with a high ceiling, metal beams, and bright overhead lights. The text "Let's Play the Recycling Game!" is overlaid in the center of the image in a white, sans-serif font.

Let's Play the Recycling Game!



Ermin Siljkovic

Recycling Coordinator

Orange County DPW

Division of Environmental
Facilities & Services (EF&S)

(845) 291-3246 (Office)

(845) 637-9041 (Cell)

(845) 291-4570 (Fax)

esiljkovic@orangecountygov.com